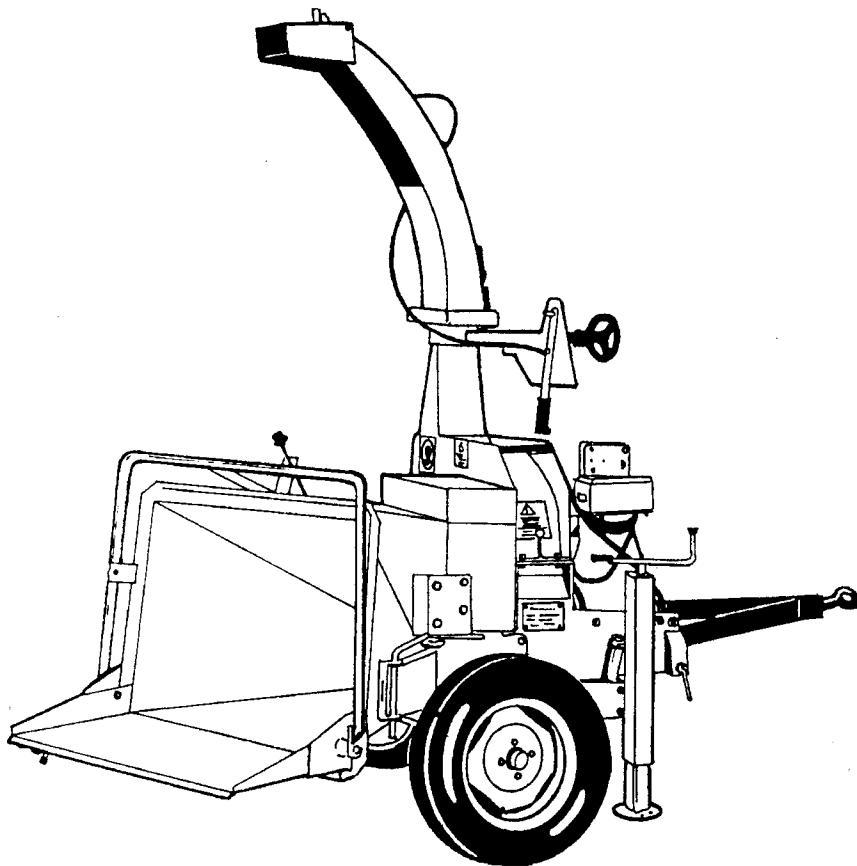


pezzolato

**Pezzolato houtversnipperaar
type 780/200**

Handleiding



- In geval van verstopping, wacht voor het openen van de kap eerst totdat de schijf geheel gestopt is.
- Draai de schijf nooit met de handen, maar door gebruik te maken van gereedschap.
- Controleer de scherppte en het vastzitten van de messen door iedere kap opening.

Mes slijpen:

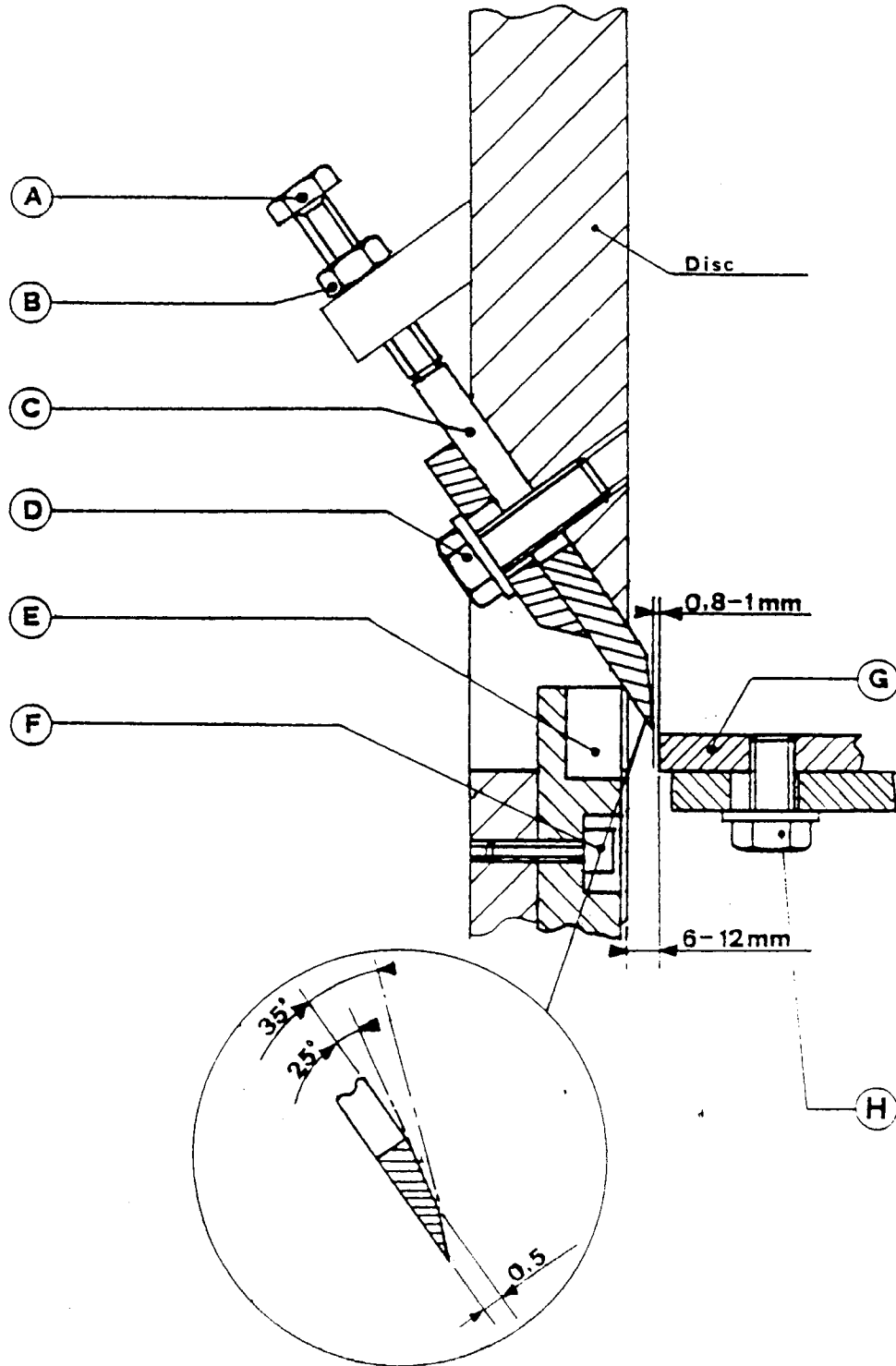
Laat de messen zakken door de 4 bouten los te schroeven Pos. A, blz. 6.

Slijp vervolgens, wij verwijzen U naar de tekening voor de juiste slijphoek, neem na het vastzetten weer de afstand in acht tussen het mes en het ondermes, zie blz. 6.

Onderdelen:

Om onderdelen te bestellen verwijzen wij U naar de tekeningen op blz. 6 tot 18 en verzoeken u bij bestelling de datum, die op het identificatie-plaatje van de machine staat, door te geven.

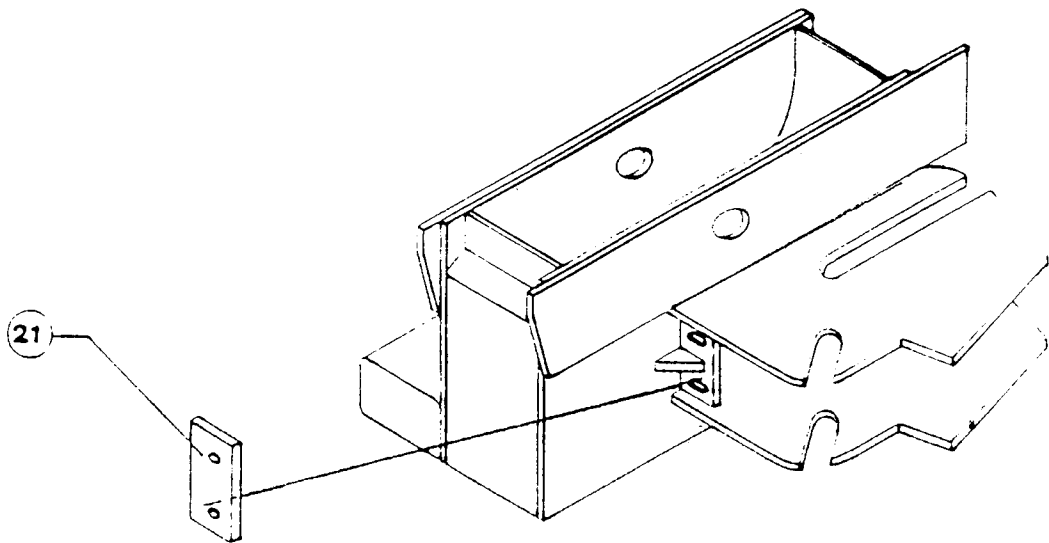
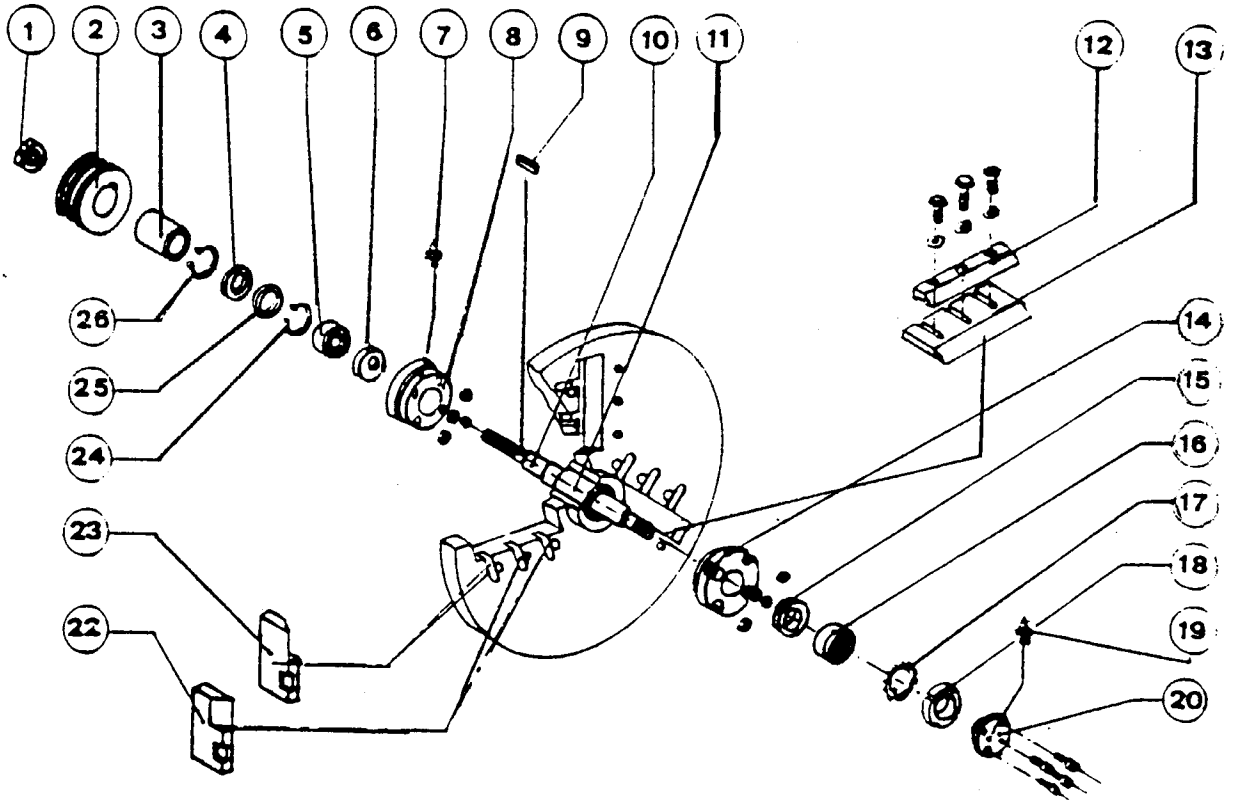
MES AFSTELLING



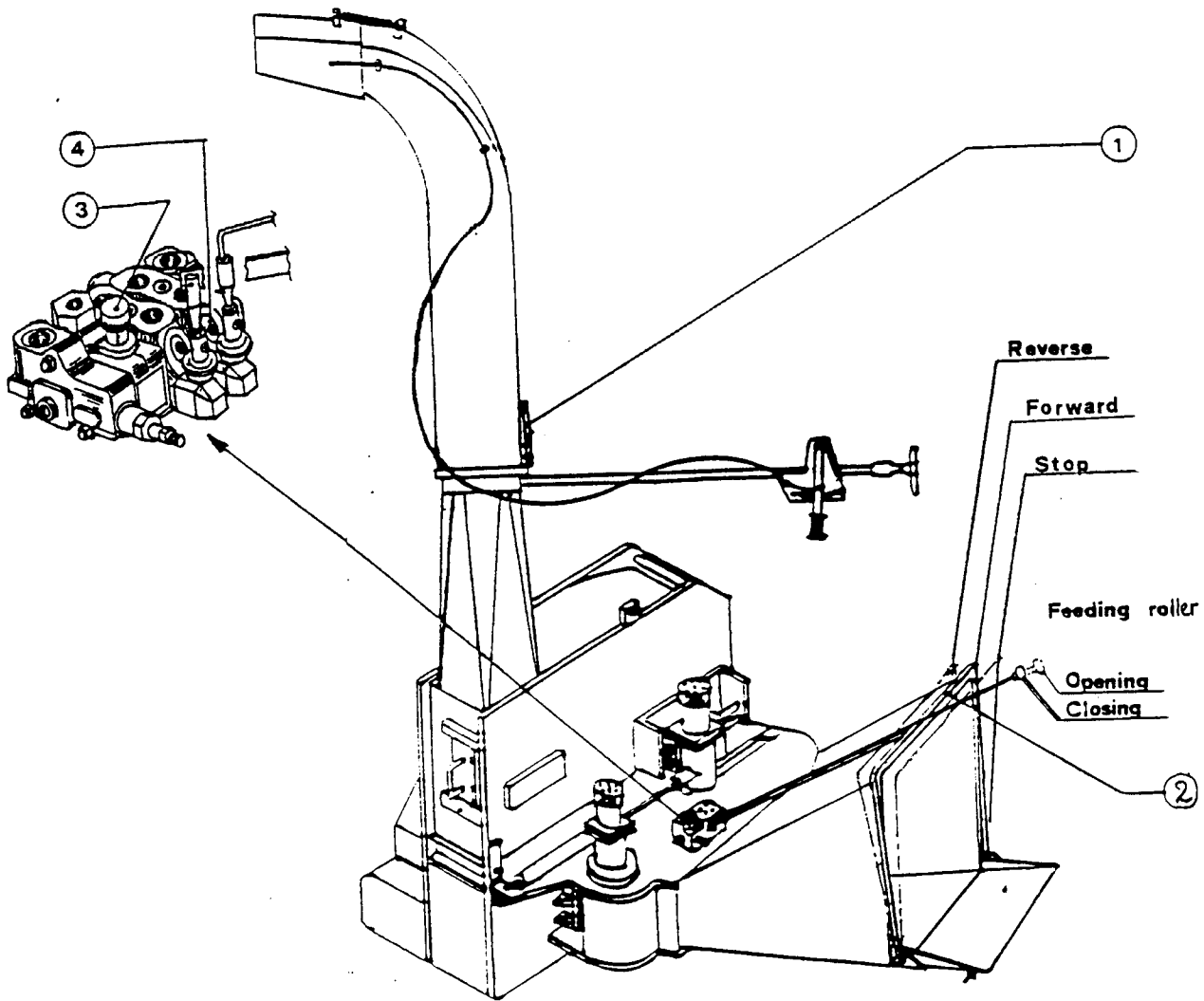
Lijst van onderdelen bij tekening op bladzijde 7:

<u>Pos.</u>	<u>Bestelnr.</u>	<u>Omschrijving</u>
01	09700550	Moer M40x1,5
02	70780210	Pulley 2-schijfs 2A
03	01000253	Afstandsbus
04	09600405	Oliekeerring 80x60x10
05	04800140	Kogellager 22210.cc
06	09600402	Oliekeerring 80x60x10
07	09700100	Vetnippel
08	01001251	Lageras-houder voorzijde
09	09700195	Inlegspie 8x7x20
10	02002785	As
11	09700270	Koppelingsbus
12	02004780	Mesdrukker-groot
13	02204780	Versnippermes-groot
14	01001250	Lageras-houder achterzijde
15	09600402	Oliekeerring 80x60x10
16	04800140	Kogellager 22210.cc
17	09700650	Sluitring M50
18	09700610	Ringmoer M50x1,5
19	09700100	Vetnippel
20	01001252	Deksel
21	02004783	Tegenmes vertikaal
22	02204781 S.	Fijn mes links
23	02204781 D.	Fijn mes rechts
24	09600355	Seegerring 90i
25	01000254	Afstandsring
26	09600355	Seegerring 90i

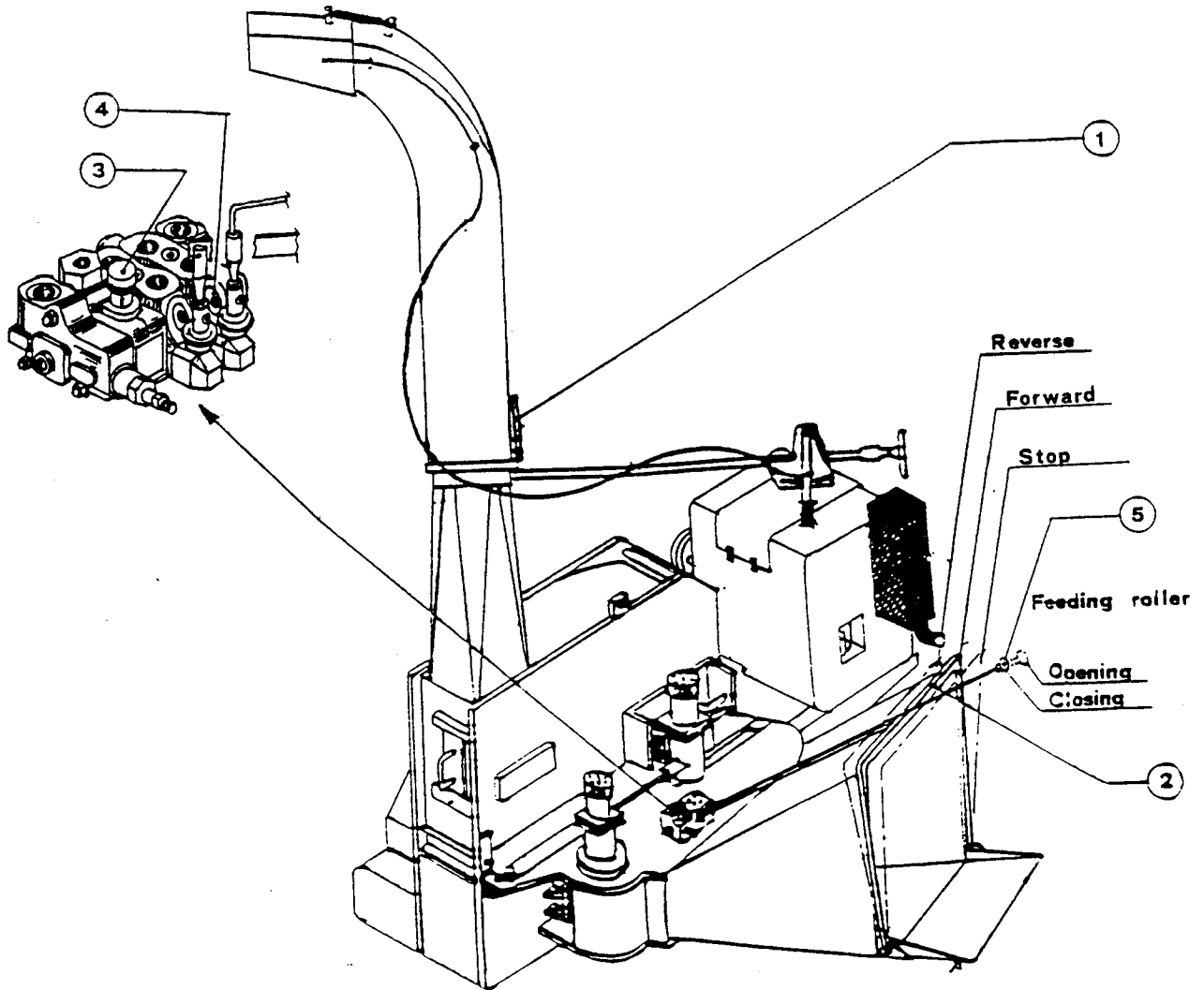
HOUTVERSNIJPERSCHIJF, AS EN LAGER



MACHINE-BEDIENING AFTAKAS VERSIE



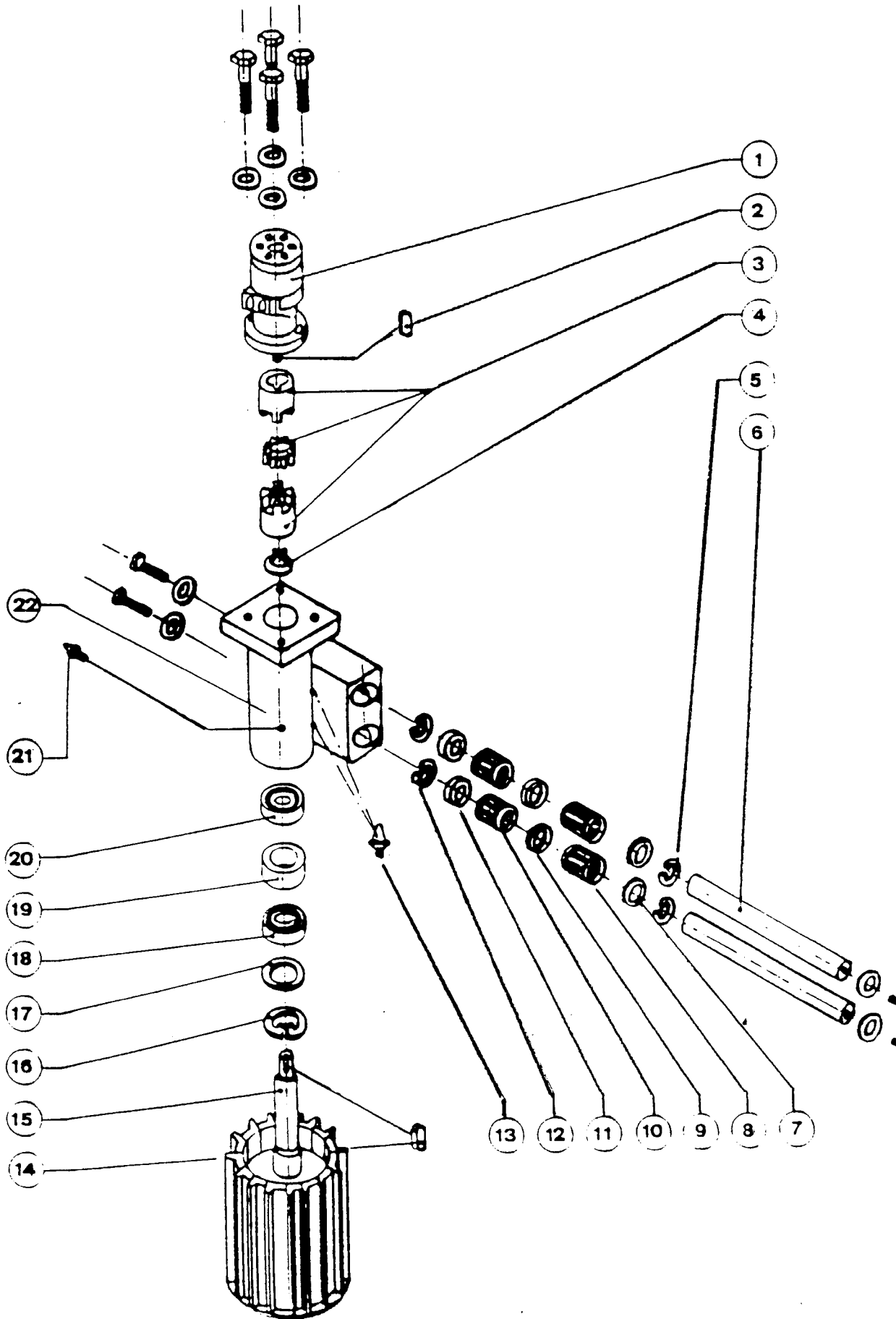
MACHINE-BEDIENING MOTOR AANGEDREVEN



Lijst van onderdelen bij tekening op bladzijde 11:

<u>Pos.</u>	<u>Bestelnr.</u>	<u>Omschrijving</u>
01	03900020	Hydrauliek motor pomp MP200 D 25
02	09700200	Inlegspie 10x8x45
03	075000448	Komplete koppeling
04	0960034	Seegerring 40E
05	09600345	Seegerring 52i
06	09500705	Geleider
07	09600400	Oliekeerring 40x80x5
08	04800410	Naaldlager KH40/60
09	01000255	Afstandsbus
10	04800410	Naaldlager KH40/60
11	09600400	Oliekeerring 40x80x5
12	09600345	Seegerring 52i
13	09700100	Vetnippel
14	09700200	Inlegspie 10x8x45
15	02000791	Wals
16	09600350	Seegerring 80i
17	04800590	Ring 40/80
18	04800135	Kogellager 22208.cc
19	01000256	Afstandsbus
20	04800070	Kogellager 6208-2RS
21	09700100	Vetnippel
22	02007800	Walshouder

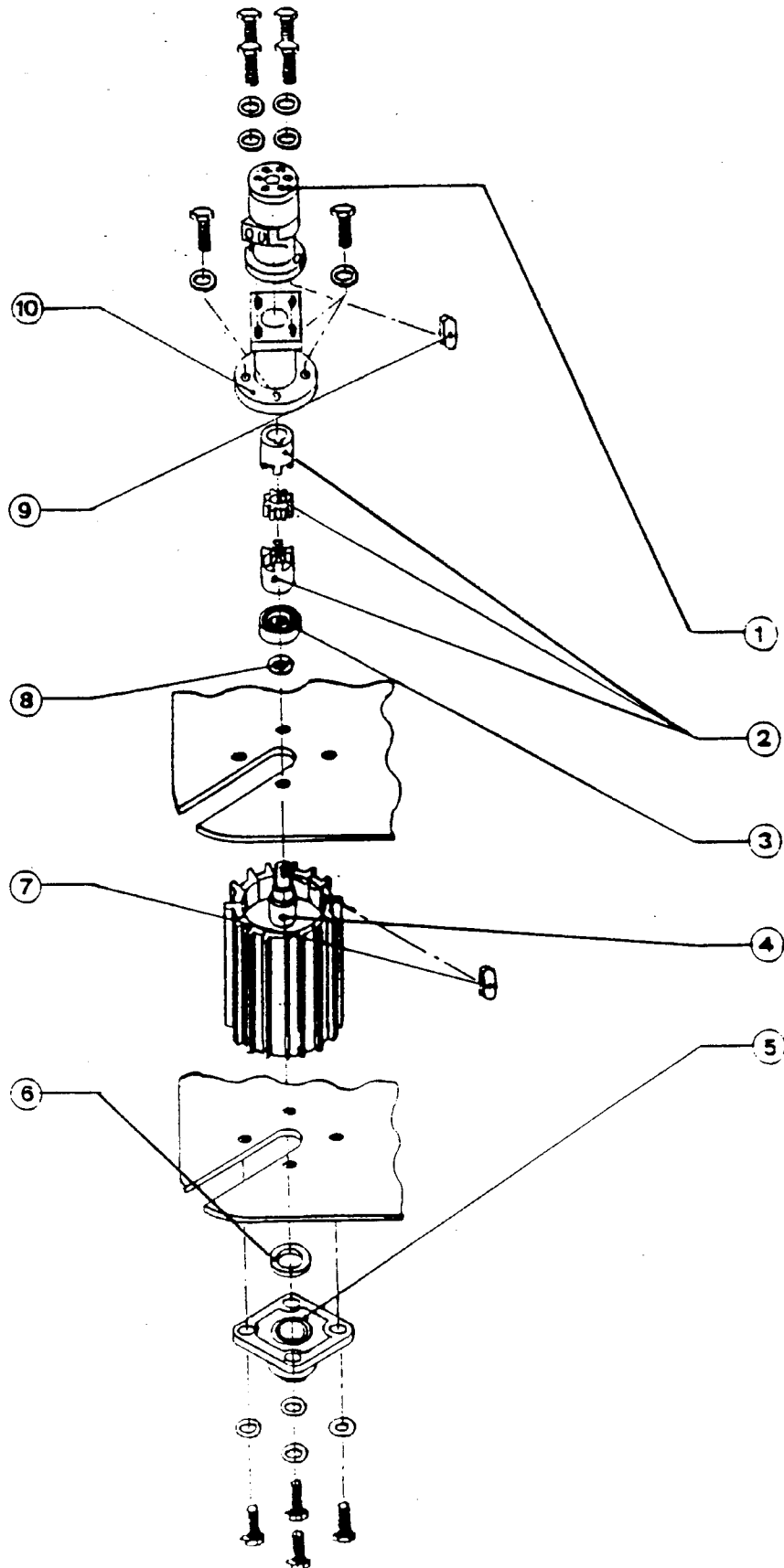
BEWEEGBARE INVOERWALS



Lijst van onderdelen bij tekening op bladzijde 13:

<u>Pos.</u>	<u>Bestelnr.</u>	<u>Omschrijving</u>
01	03900020	Hydrauliek motor pomp OMP 200 D25
02	07500044	Komplete koppeling
03	04800135	Kogellager 22208.cc
04	02000790	Wals
05	04800350	Houder
06		Afstandsbus
07	09700197	Inlegspie 10x5x50
08		Afstandsbus
09	09700200	Inlegspie 10x8x45
10	01007805	Walshouder

VASTE INVOERWALS

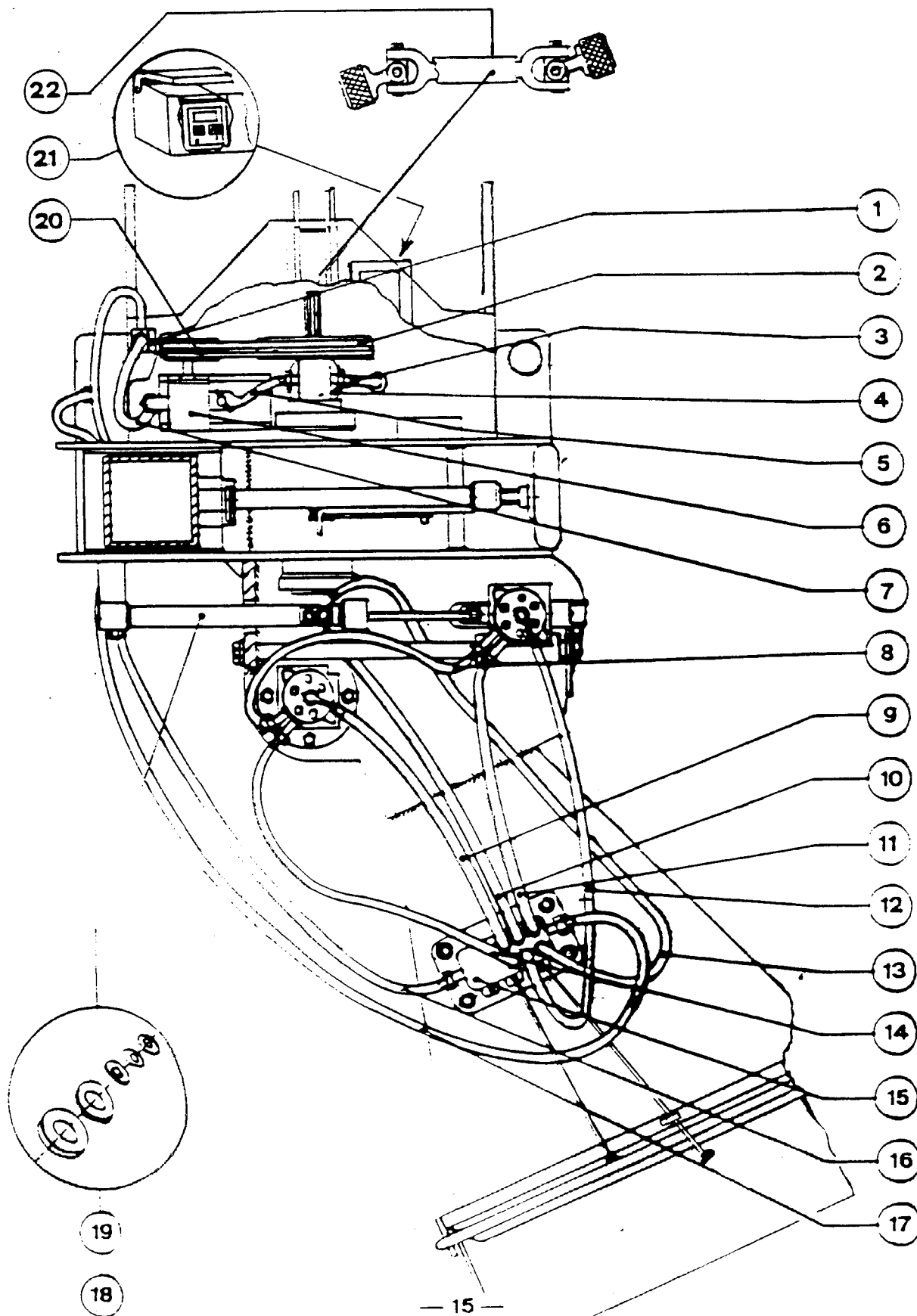


Lijst van onderdelen bij tekening op bladzijde 15

<u>Pos.</u>	<u>Bestelnr.</u>	<u>Omschrijving</u>
01	09400120	No-stress klep DF5
02	05300318	V-snaar SPA1000
03	08000025	Hydrauliek leiding D.19x120
04	07800045	Hydrauliek filter FCA 151 CV1
05	08000025	Hydrauliek leiding D.19x500
06	06500205	Hydrauliek pomp MLPD 205/C
07	* 08000215	Hydrauliek slang R2T 3/8"x320 F90° 3/8" SF 3/8"
08	08000245	Hydrauliek slang R2T 3/8"x530 F90° 3/8" F90° 3/8"
09	08000145	Hydrauliek slang R1T 1/4"x850 SF 1/4" B.90° D.8
10	08000310	Hydrauliek slang R2T 3/8"x1040 F90° 3/8" SF 3/8"
11	08000250	Hydrauliek slang R2T 3/8"x600 F90° 3/8" F90° 3/8"
12	08000140	Hydrauliek slang R1T 1/4"x800 F90° 1/4" S.B. D.8
13	08000302	Hydrauliek slang R2T 3/8"x990 SF 3/8" + oog 1/2"
14	08000252	Hydrauliek slang R2T 3/8"x650 F90° 3/8" + oog 1/2"
15	07000005	Verdeler SD6
16	08000324	Hydrauliek slang R2T 3/8"x1520 F90° 3/8" FG 3/8"
17	08000322	Hydrauliek slang R2T 3/8"x1460 F90° 3/8" F90° 3/8"
18	07300065	Hydrauliek cilinder 40/50
19	09500305	Pakkingsset cilinder
20	04500355	Houder + pulley
21	09400145	No-stress
22	09700010	Aftakas type A5

* = voor machine met no-stress apparaat

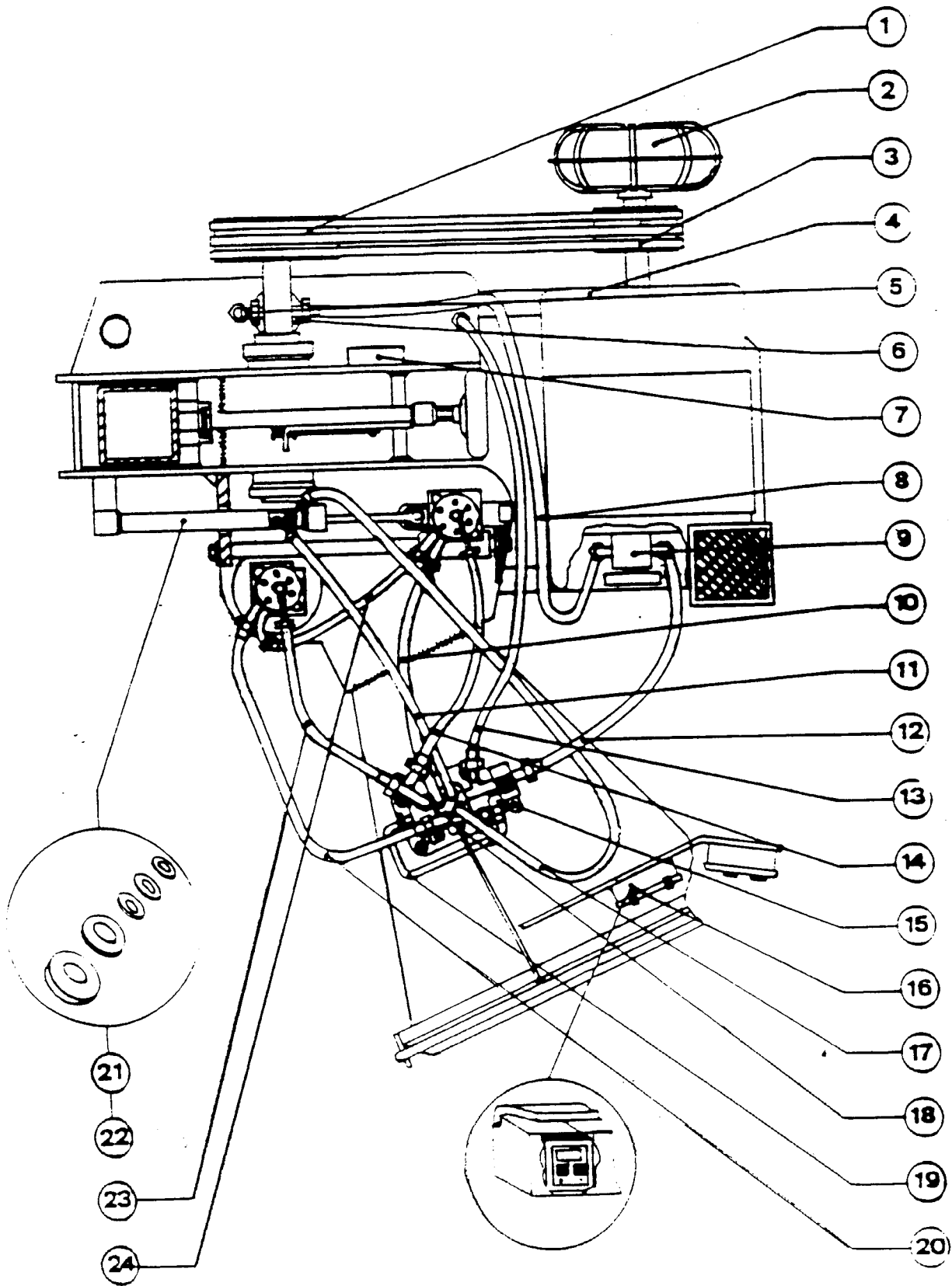
HYDRAULISCH CIRCUIT



Lijst van onderdelen bij tekening op bladzijde 17:

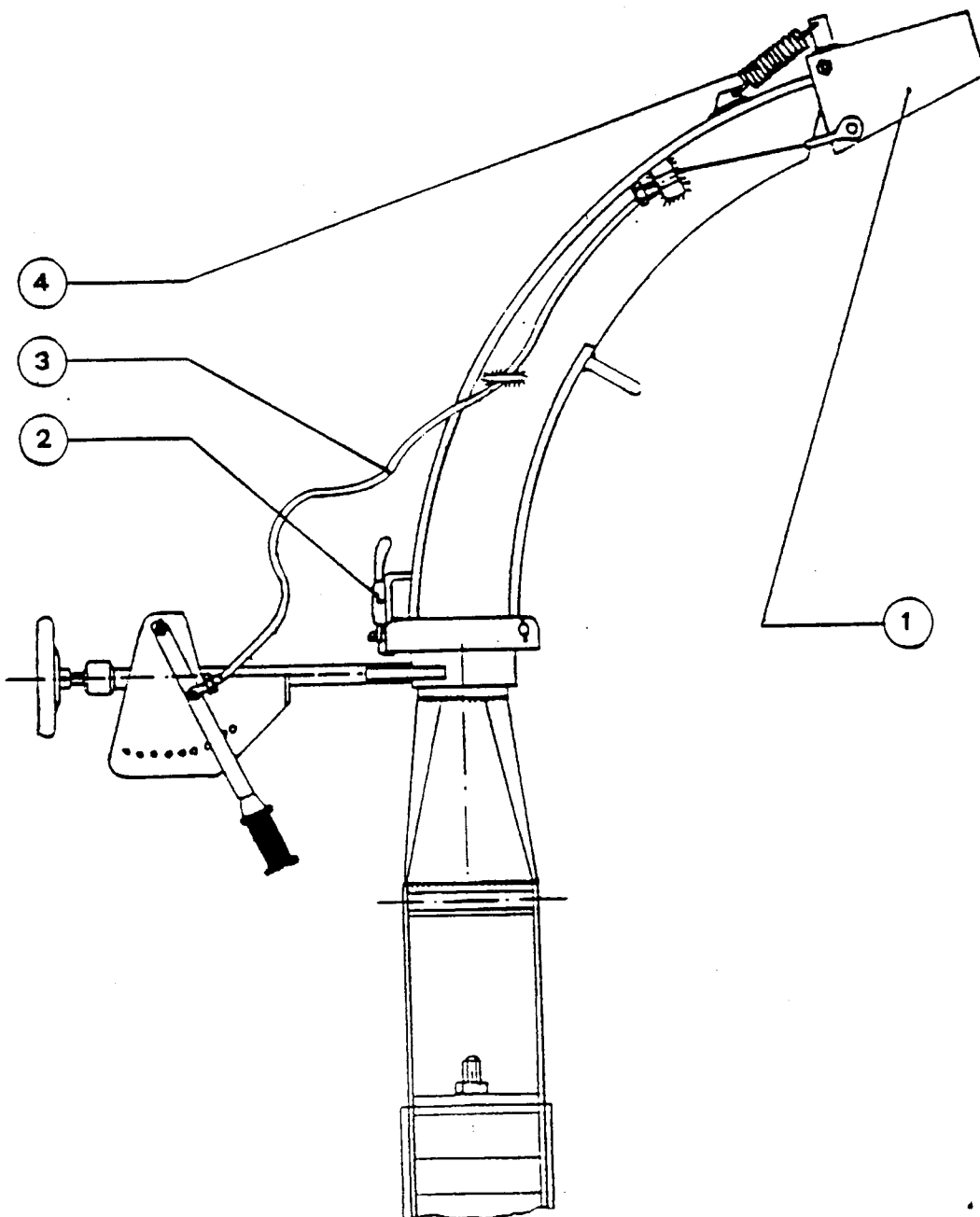
<u>Pos.</u>	<u>Bestelnr</u>	<u>Omschrijving</u>
01	04500122	Pulley D.300 4-schijfs A
02	07500018	Hydrauliek koppeling
03	05300317	V-snaar SPA982
04	03700020	3-cilinder Hatz motor
05	08000025	Hydrauliek leiding 19x450
06	07800045	Hydrauliek filter FCA151 CV1
07	09700180	Urenteller
08	08000030	Hydrauliek leiding D.25x2000
09	06500026	Hydrauliek pomp Casappa CPL 6,2 S/B 03
10	08000252	Hydrauliek slang R2T 3/8"x650 F90° 3/8" + oog 1/2"
11	08000310	Hydrauliek slang R2T 3/8"x1040 F90° 3/8" - FD 3/8"
12	08000217	Hydrauliek slang R2T 3/8"x340 F90° 3/8" - FD 3/8"
13	08000308	Hydrauliek slang R2T 3/8"x1020 F90° - FD 3/8"
14	08000145	Hydrauliek slang R1T 1/4"x850 FD 1/4 - D.90° D.8
15	09400120	Klep DF 5
16	09400145	No-stress
17	08000302	Hydrauliek slang R2T 3/8"x990 FD 3/8" + oog 1/2"
18	07000005	Verdeler SD6
19	01000000	Hydrauliek leiding
20	08000250	Hydrauliek slang R2T 3/8"x600 F90° 3/8"
21	07300065	Cilinder 40/50
22	09500305	Pakingsset cilinder
23	08000140	Hydrauliek slang R1T 1/4"x800 F90° 1/4" - P.D.8
24	08000245	Hydrauliek slang R2T 3/8"x530 F90° 3/8" - F90° 3/8"

HYDRAULISCHE CIRCUIT



Lijst van onderdelen bij tekening op bladzijde 19

<u>Pos.</u>	<u>Bestelnr.</u>	<u>Omschrijving</u>
01	01000780	Verspreidkap
02	09700430	Sluithandel
03	09700350	Kabel voor verspreidkap
04	05800075	Trekveer

HOUTVERSNIJPER UITWERPPIJP

pezzolato

H 880/250

WOOD-CHIPPER

P.T.O. VERSION

**USE & MAINTENANCE
MANUAL**

S U M M A R Y

Preliminary	Page 2
Technical specifications	" 3
Transportation	" 3
Operating instructions	" 3
Adjustment and Maintenance	" 4
Blade adjustment	" 4 - 6
Roller speed adjustment	" 4
Hydraulic spring adjustment	" 4 - 9
Maintenance	" 5
Blade sharpening	" 5
Spare parts	" 5
Spare parts: Chipping disc, shaft and bearings	" 7 - 8
Machine running sketch: P.T.O. Version	" 9
Spare parts: Hydraulic circuit - P.T.O. Version	" 10 - 11
: Mobile feed roller	" 12 - 13
: Fixed feed roller	" 14 - 15
: Chip ejecting pipe	" 16 - 17

P R E L I M I N A R Y

We thank you for having purchased a PEZZOLATO Wood-Chipper.

This machine has been manufactured with the accuracy and with the experience our firm has acquired during the years in this field of machines .

Before putting this machine in operation we are begging you to read carefully the pages of this Use & Maintenance Manual in order to follow the right instructions for a good running and assure the longest duration of the machine for your and our satisfaction.

Thanks again and good work!

B) MAINTENANCE

- Every 10 hours lubricate with grease the point C
See Page 13 and points A and B Page 8.
- After the first 100 hours replace the oil filter. See Page 11
Pos. 20.

Afterwards replace the oil filter every 300 hours.
- Change the hydraulic circuit oil every 800 hours: ROL U46;
SHELL Tellus 46.
- In case of clogging, before lifting the hood, await the complet
stop of the disc.
- Never turn the disc with the hands, but make use of a tool.
- Check sharpening and the fastening of the blades at every
hood opening.

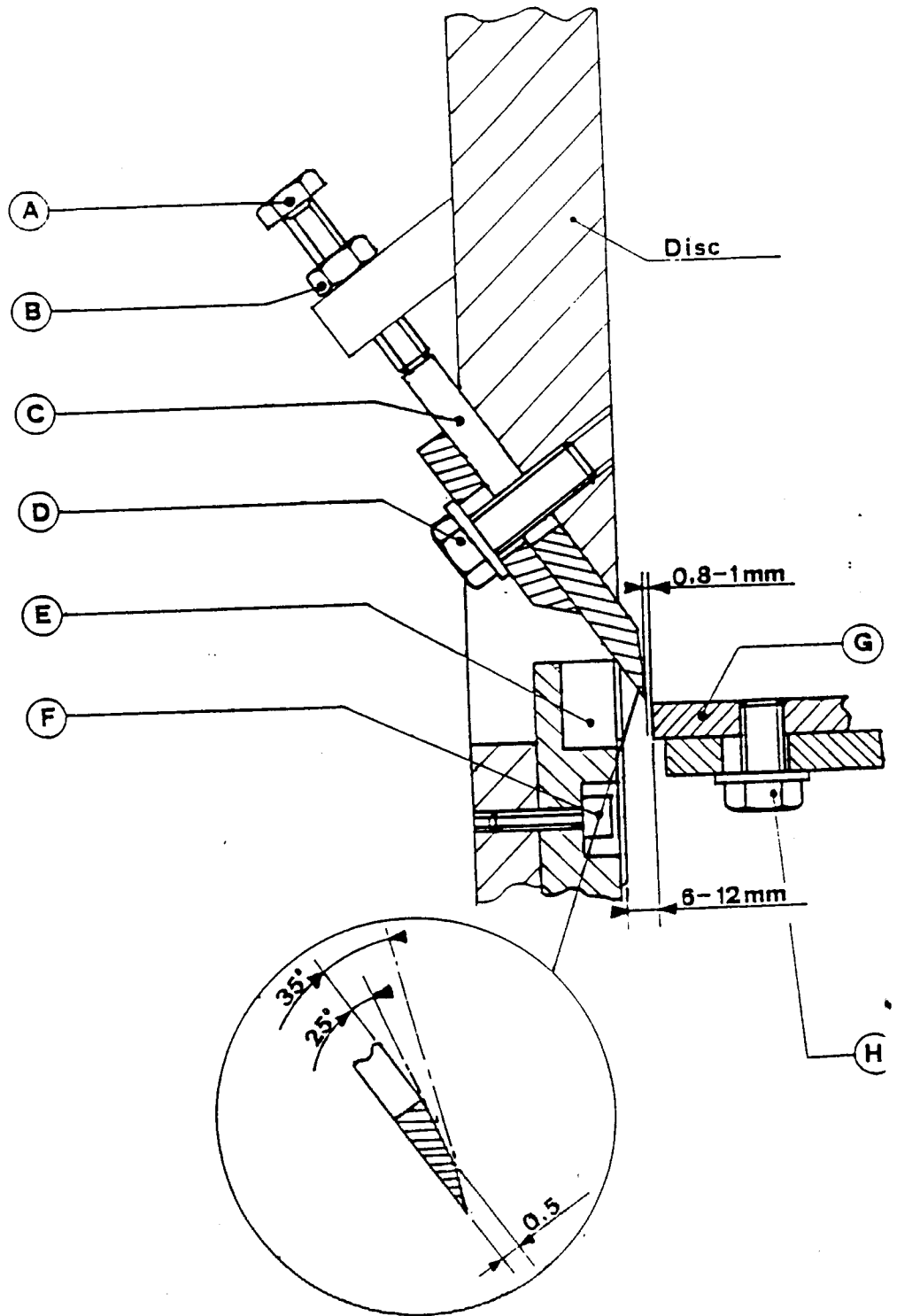
BLADE SHARPENING

- Take down the blades by loosening the 4 screws Pos. A, Page 6
then effect the sharpening making reference to the drawing
and fit again respecting the distance between them. Page 6

SPARE PARTS

For any order of spare parts, we suggest to refer to the figures
shown on pages from 6 to 17, and to provide us with the data
shown on the machine identification plate.

BLADE ADJUSTMENT

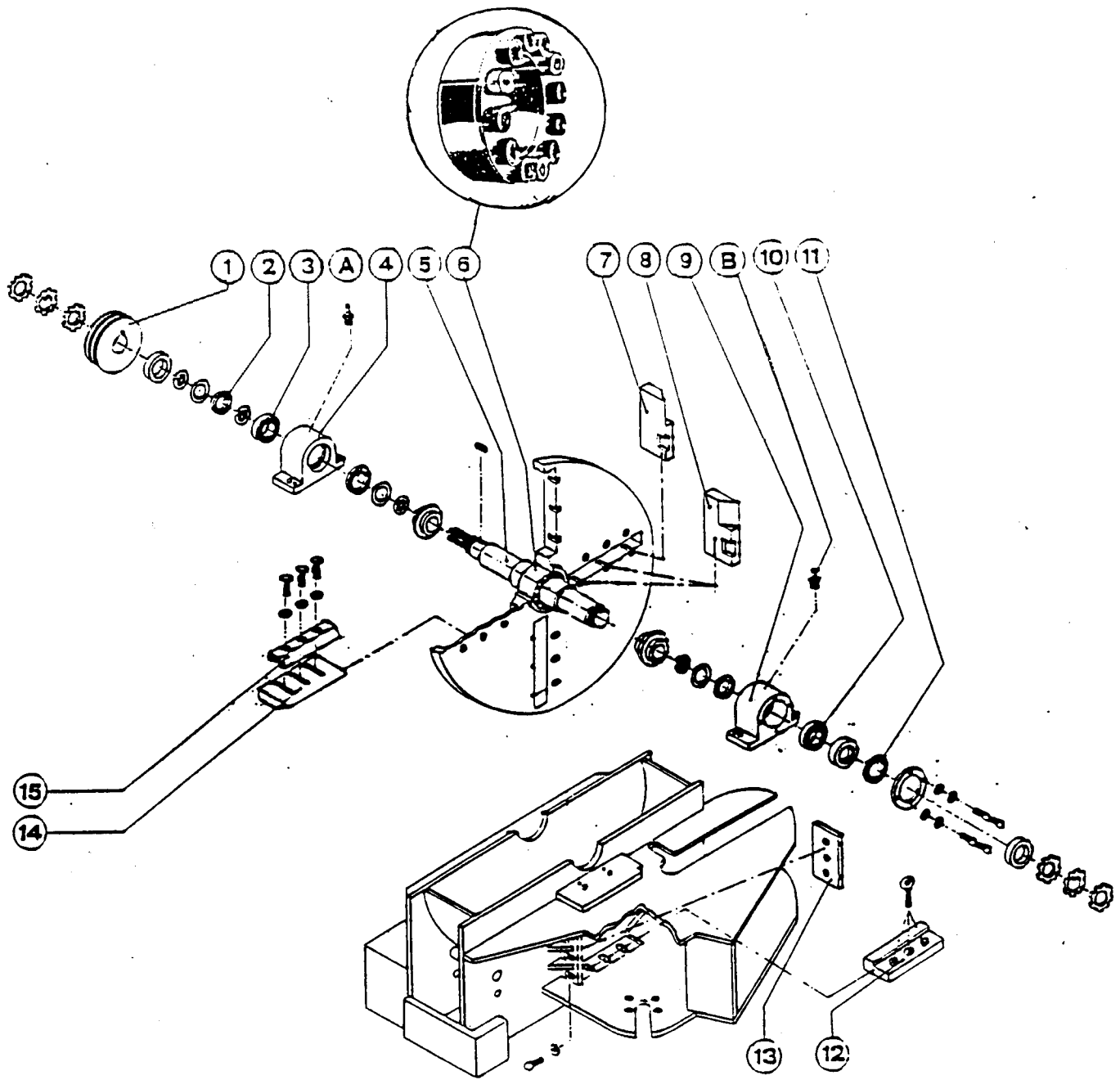


LIST OF SPARE PARTS SHOWN ON DRAWING PAGE 8

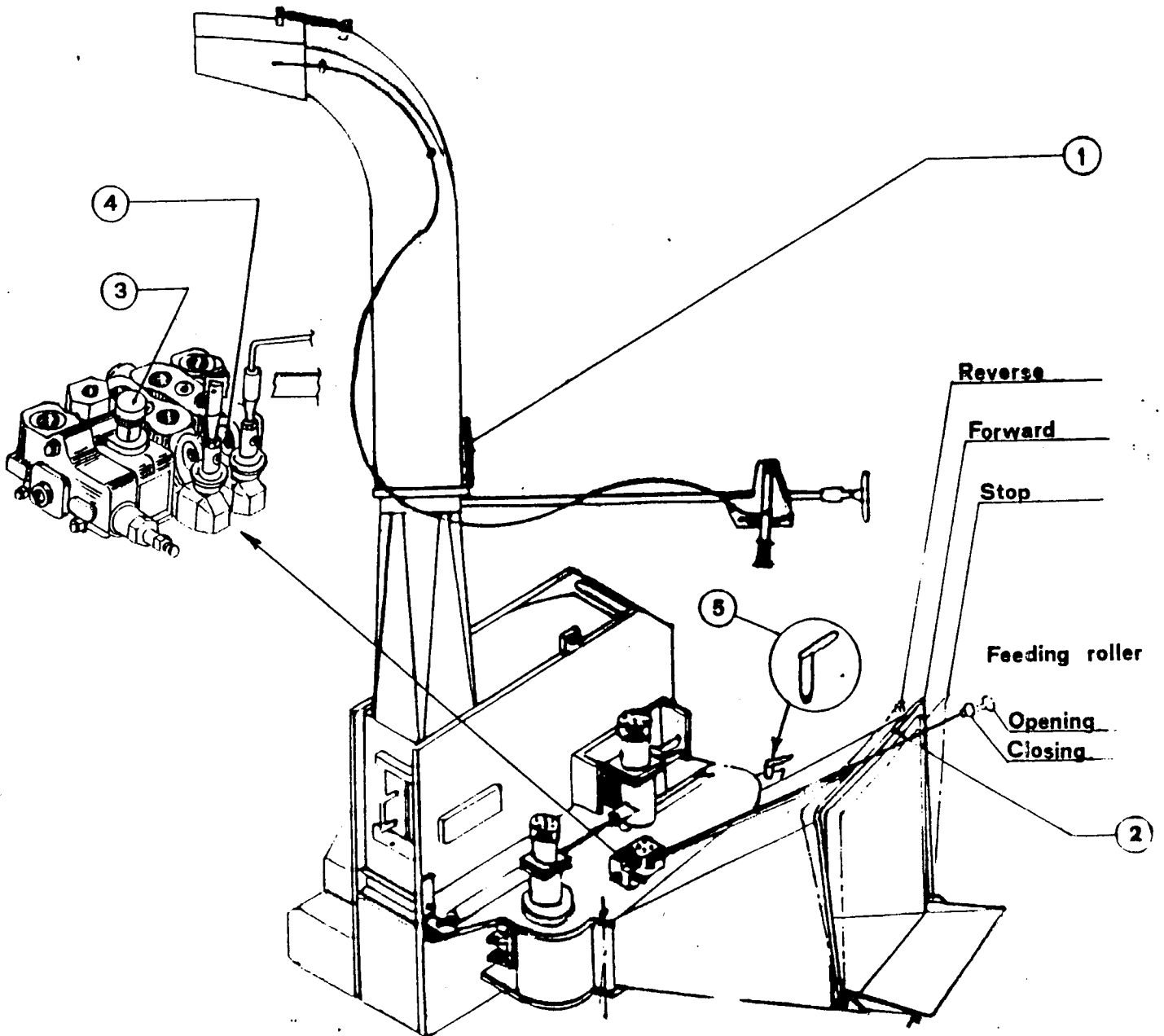
Pos.	Code number	Description
01	70880210	Pulley D.212
02	09600320	Oil seal (125 x 90 x 12)
03	04800150	Bearing 222 14 CC
04	01001715	Front support
05	02006880	Shaft
06	09700275	Key coupling 75/115
07	02204501 D	Micro blade - Right
08	02204501 S	Micro blade - Left
09	01001716	Rear support
10	04800150	Bearing 222 14 CC
11	09600315	Oil seal (110 x 90 x 12)
12	01000704	Counter-blade-Horizontal
13	02204703	Counter-blade-vertical
14	02204700	Chipping blade
15	02004702	Blade pusher

CHIPPING DISC, SHAFT AND BEARINGS

CIPPING DISC, SHAFT AND BEARING



MACHINE RUNNING



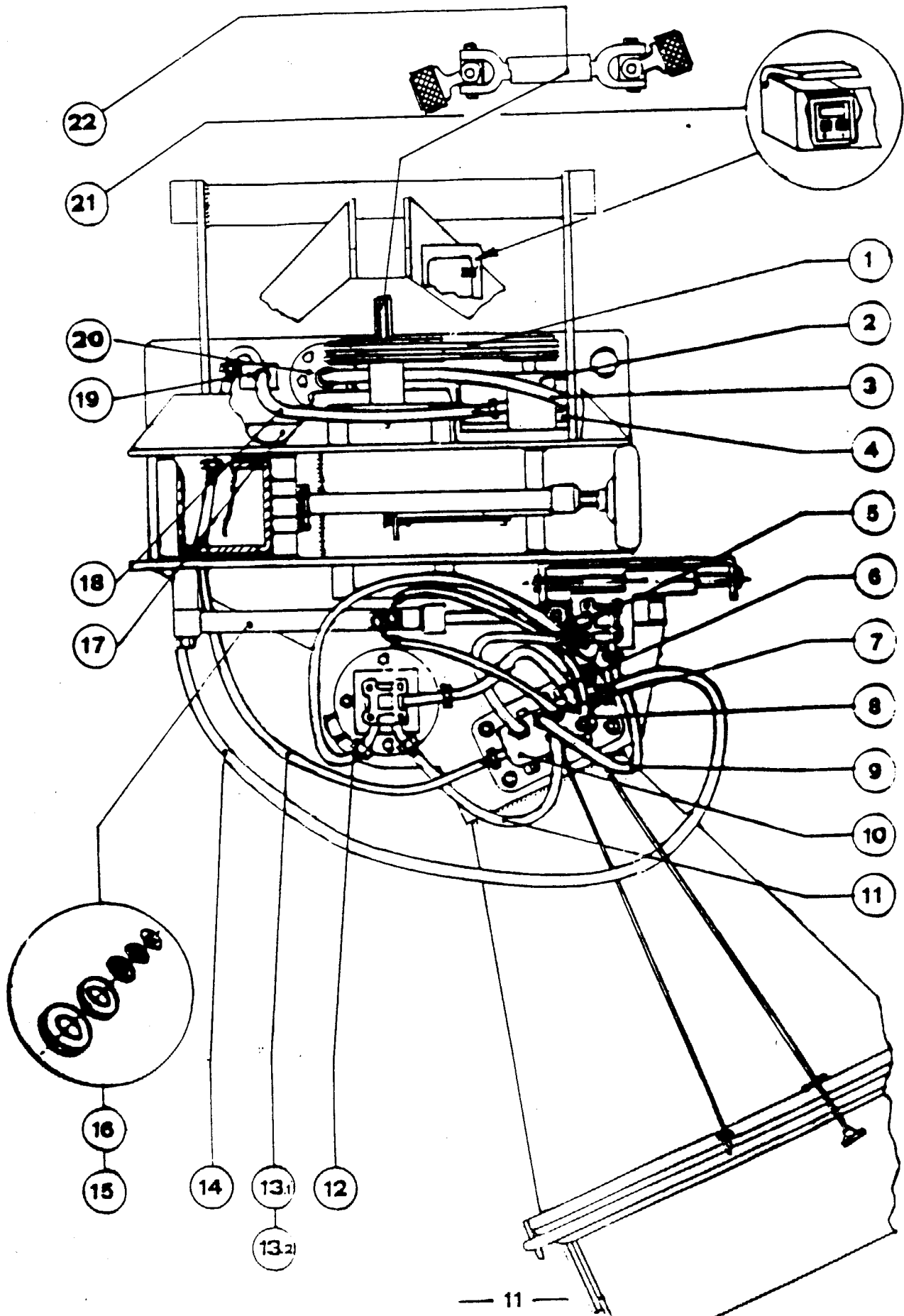
LIST OF SPARE PARTS SHOWN ON DRAWING PAGE 11-

Pos.	Code number	Description
01	05300320	Belt SPA 1107
02	06500220	Pump
03	08000030	Leghorn pipe D. 25 x470
04	04500355	Support with pulley
05	08000135	Pipe R1T 1/4" x510 SF 1/4" Eyelet 1/4"
06	08000133	Pipe R1T 1/4" x 390 SF 1/4" SF 1/4"
07	08000225	Pipe R2T 3/8" x 490 F90° 3/8" SF 3/8"
08	08000225	Pipe R2T 3/8" x 490 F90° 3/8" SF 3/8"
09	08000210	Pipe R2T 3/8" x 300 SF 3/8" SF 3/8"
10	07000005	Distributor valve SD6
11	08000312	Pipe R2T 3/8" x 1100 F90° 3/8" F90° 3/8"
12	08000245	Pipe R2T 3/8" x 530 F90° 3/8" F90° 3/8"
13.1	08000321	Pipe R2T 3/8" x 1430 SF 3/8" SF 3/8"
13.2 *	08000330	Pipe R2T 3/8" x 1650 SP/15 SF 3/8"
14	08000323	Pipe R2T 3/8" x 1380 F90° 3/8" SF 3/8"
15	07300070	Hydraulic cylinder-Piston 40/50 Rod 22 Strok 310
16	09500305	Gasket kit for piston
17	09700180	Hourmeter
18	08000222	Pipe R2T 3/8" x 450 F90° 12 SD 15
19	09400120	Valve DF 5
20	07800045	Oil filter
21	09400145	No-stress
22	09700015	Cardan shaft 106 101 F41 097099

* For machine without no-stress equipment.

HYDRAULIC CIRCUIT FOR P.T.O. VERSION

HYDRAULIC CIRCUIT

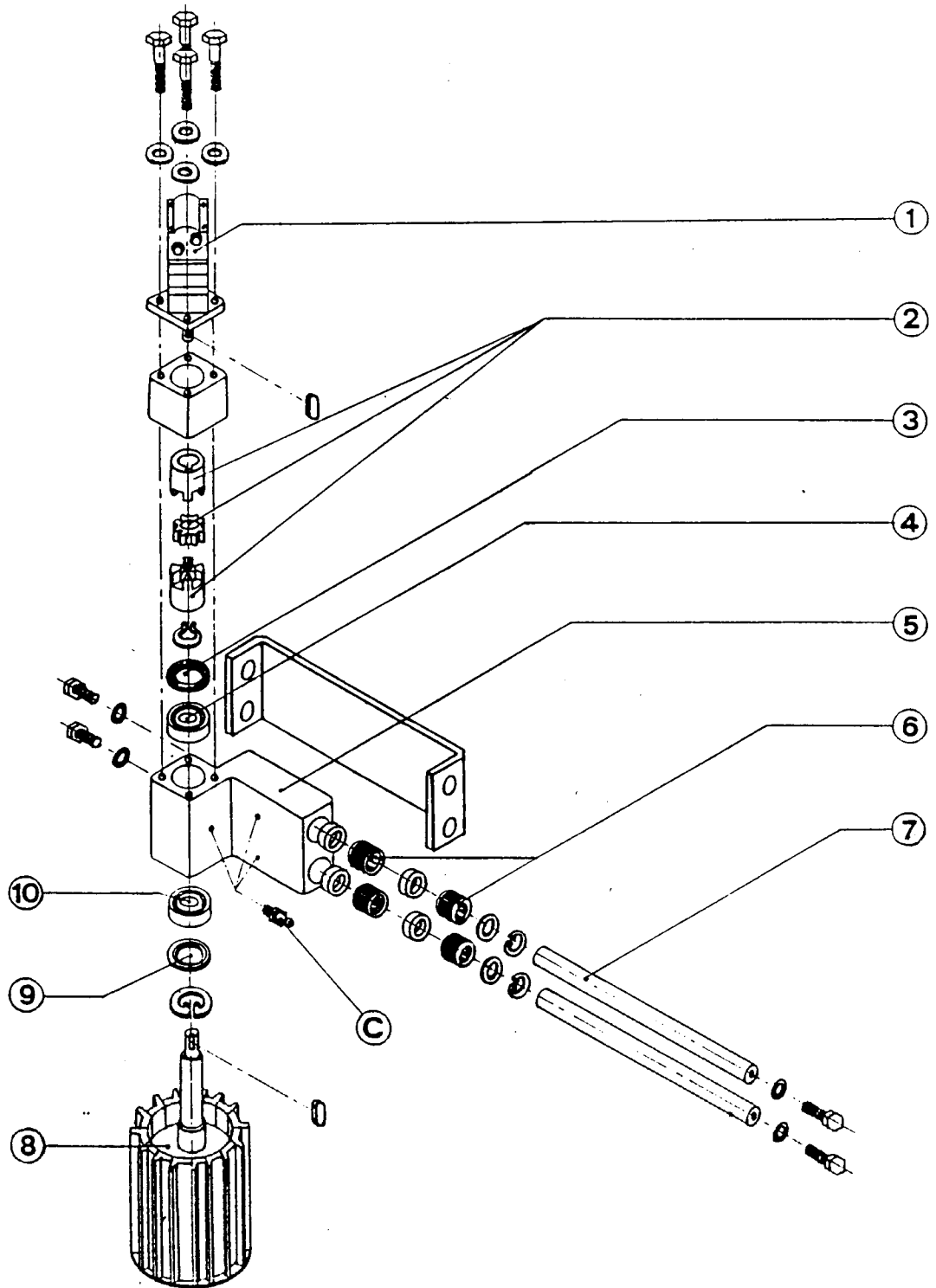


LIST OF SPARE PARTS SHOWN ON DRAWING PAGE 13

Pos.	Code number	Description
01	03900030	Hydraulic motor OMS 315 D32
02	07500045	Complete coupling
03	09600420	Oil seal 90/50/10
04	04800410	Bearing 22208 CC
05	70880211	Cast iron support
06	04800410	Linear bearing LBCR 402LS
07	09500710	Guide
08	02000891	Roller D.285
09	04800592	Nilos (90 x 50 x 4)
10	04800070	Bearing 6208 2 RS

MOBILE FEEDING ROLLER

MOBILE FEED ROLLER

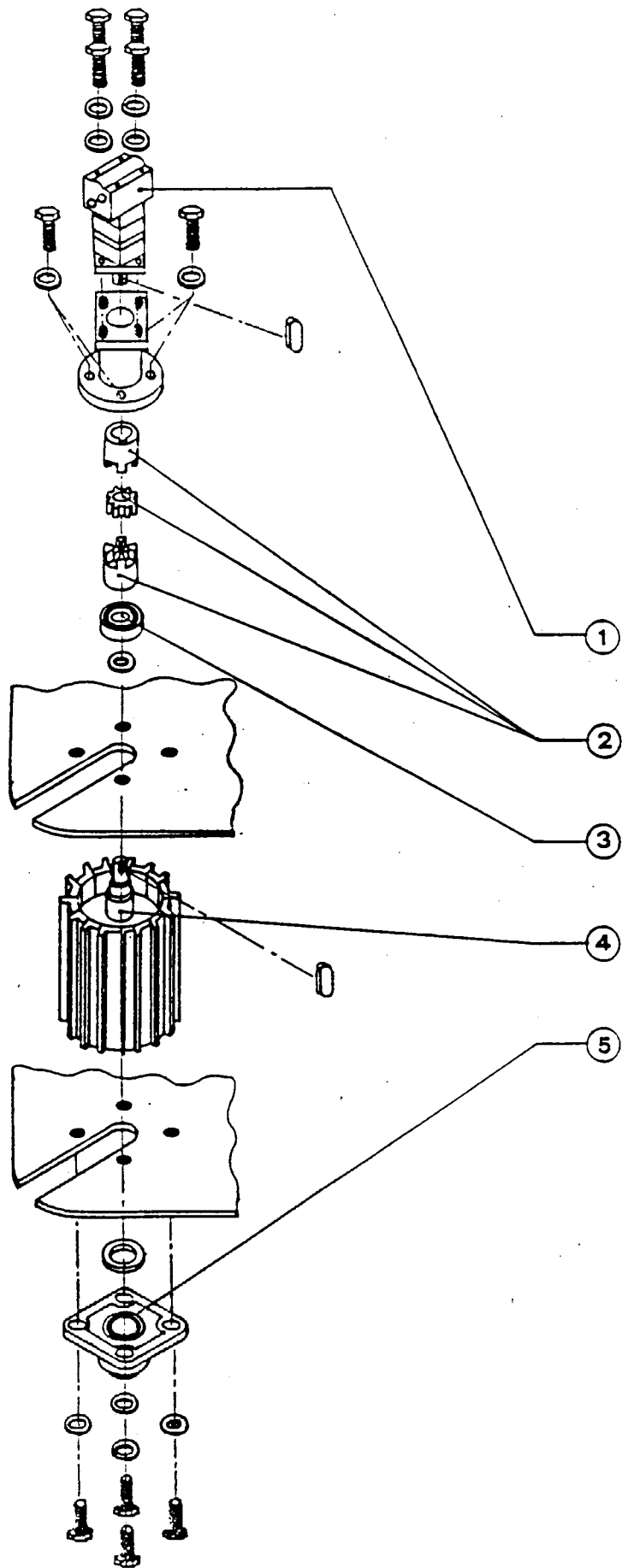


LIST OF SPARE PARTS SHOWN ON DRAWING PAGE 15

Pos.	Code number	Description
01	03900030	Hydraulic motor
02	07500045	Complete coupling
03	04800080	Bearing 6210 2RS
04	02000890	Roller D. 282
05	04800350	Support FY 50TF

FIXED FEEDING ROLLER

FIXED FEED ROLLER

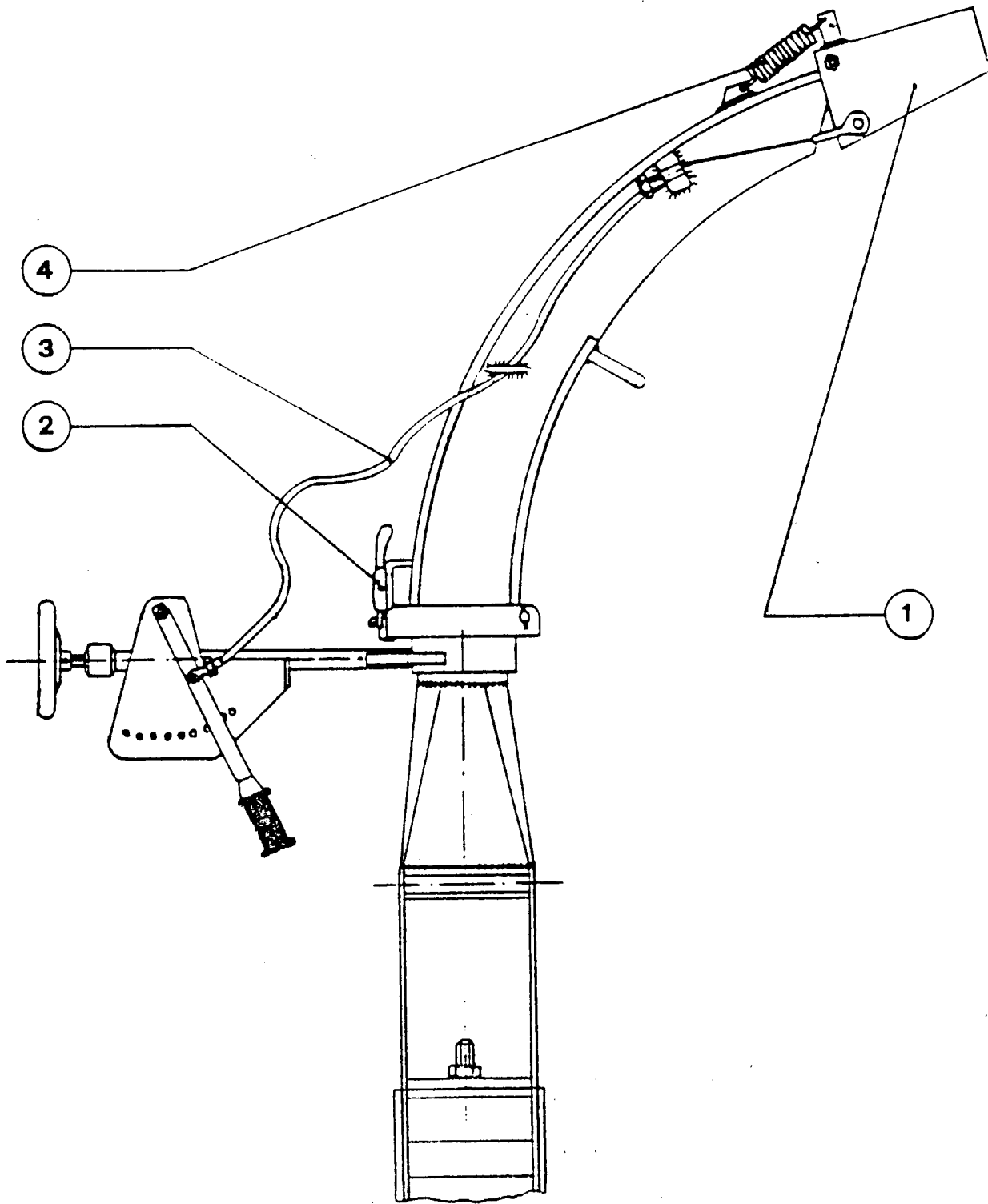


LIST OF SPARE PARTS SHOWN ON DRAWING PAGE 17

Pos.	Code number	Description
01	01000880	Orientation cap
02	09700430	Lock handle
03	09700353	Cable for cap orientation
04	05800075	Spring

CHIPPER EJECTING PIPE

CHIPPER EJECTING PIPE





pezzolato

PEZZOLATO officine costruzioni meccaniche S.p.A.
12030 ENVIE (Cuneo Italia - Via Provinciale 4)
Tel. (0175) 78077 (3 linee urbane)
TELEX: 214528 PEZOL I
FAX (0175) 73421